

2022 Conservation Report

Report Content

Elected Citizen Led Board	2
Conservation Funding	3
SWCD Ripple Affect	4
Completed Projects	5
Protecting Habitat	6
Woodland Management	7
Landowners Planted 27,000 Trees	8
Crosslake Stormwater Fixes	9
120 Acres of Forest Land Donated CWC	10
Well Water Nitrate Testing	11
Kristie Roedl, CWC Conservatist of the Year	12
Senator Ruud, MASWCD Legislator of the Year	13
Conservation Partners	14



CROW WING
Soil & Water
CONSERVATION DISTRICT

Vision: Clean water, productive lands, and vibrant communities.

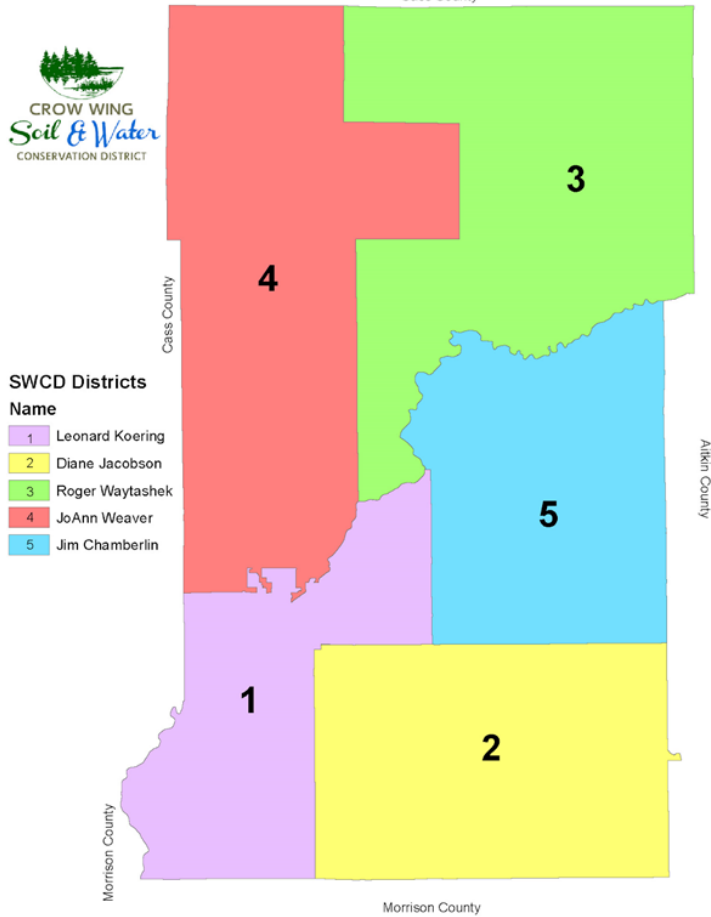
Mission: Fostering healthy lands and clean water through voluntary conservation.

Values: Stewardship, Support, Integrity, Leadership, and Partnerships



Elected Citizen Led Board

SWCD Supervisor District Map



Crow Wing SWCD Board of Supervisors:

Jim Chamberlin
Board Chair, District 5

JoAnn Weaver
Secretary, District 4

Diane Jacobson
Reporter, District 2

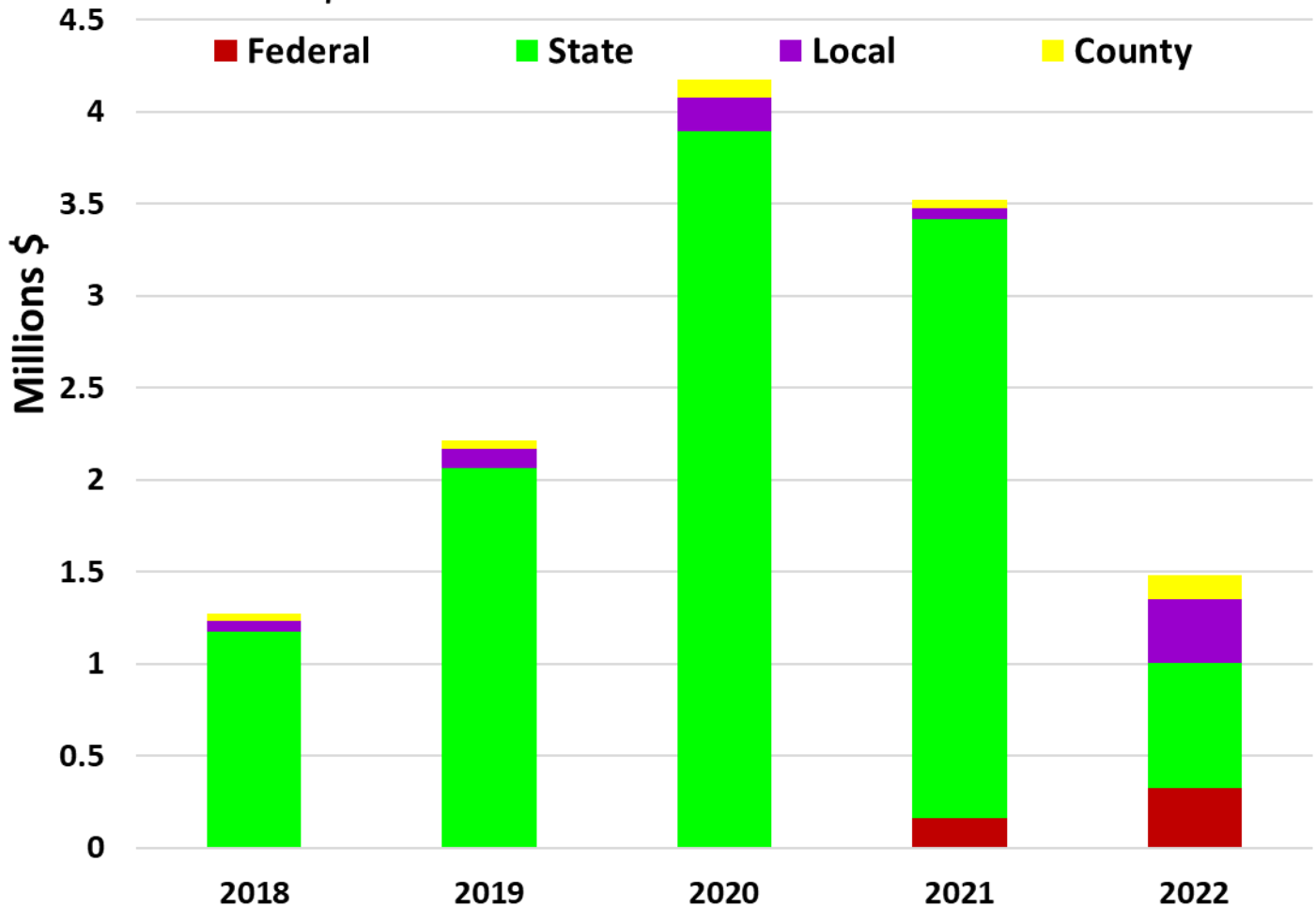
Leonard Koering
Treasurer, District 1

Roger Waytashek
Vice-Chair, District 3



Conservation Funding

\$11 Million for Conservation 2018-2022



2022 = \$1.4 Million for Conservation

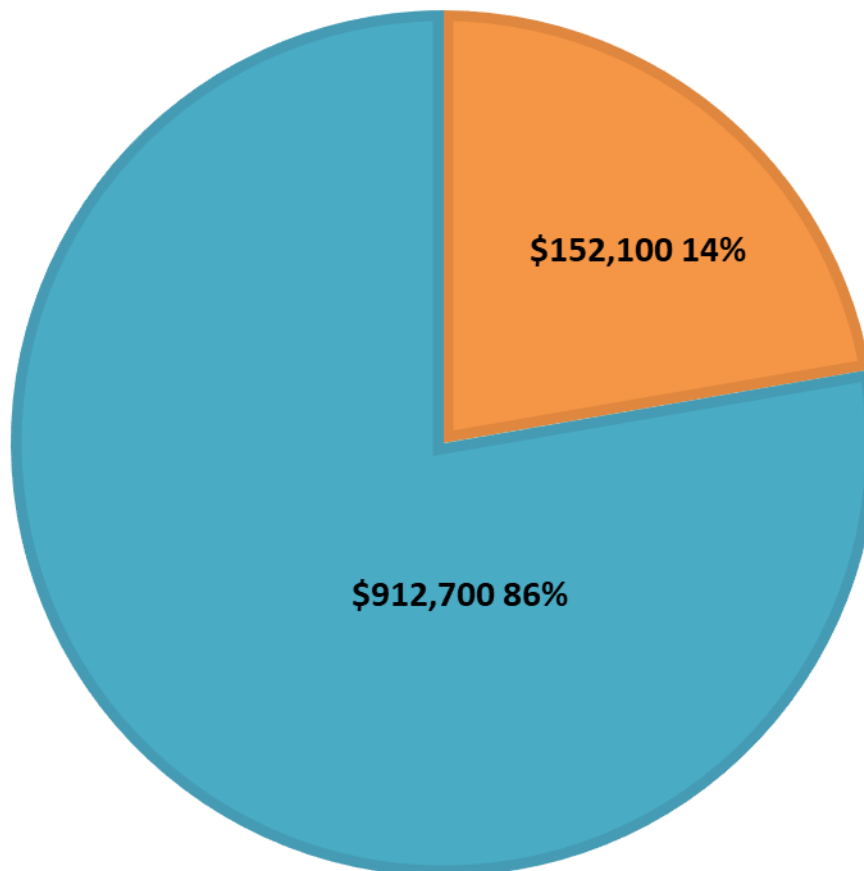
County Funds		Federal	
In-kind Rent and IT Support	\$41,300	MPCA 319 Funding	\$320,706
Fee for Services, Chloride, & CSAH 66	\$92,000	State Funds	
Total	\$133,300		
Local		Pine River Watershed Based Funding	\$482,000
City of Crosslake CSAH 66 Project	\$167,600	Local Capacity	\$133,800
Landowner Project Contribution	\$166,000	HELP Grant Northland Arboretum	\$40,000
Total	\$343,708	Buffer, Cost-Share, Conservation Delivery	\$36,400
		Total	\$684,600

2022 SWCD Ripple Affect

SWCD Leveraged \$10 for every \$1 of SWCD MN Grant Funds (2022).

- New Federal and State contracts of \$1.0 million.
- Leveraged \$133,293 in local contributions.
- 85 to 90 percent of grants and contracts go directly into the local economy for supplies, materials, construction, contractors, and landowner payments.

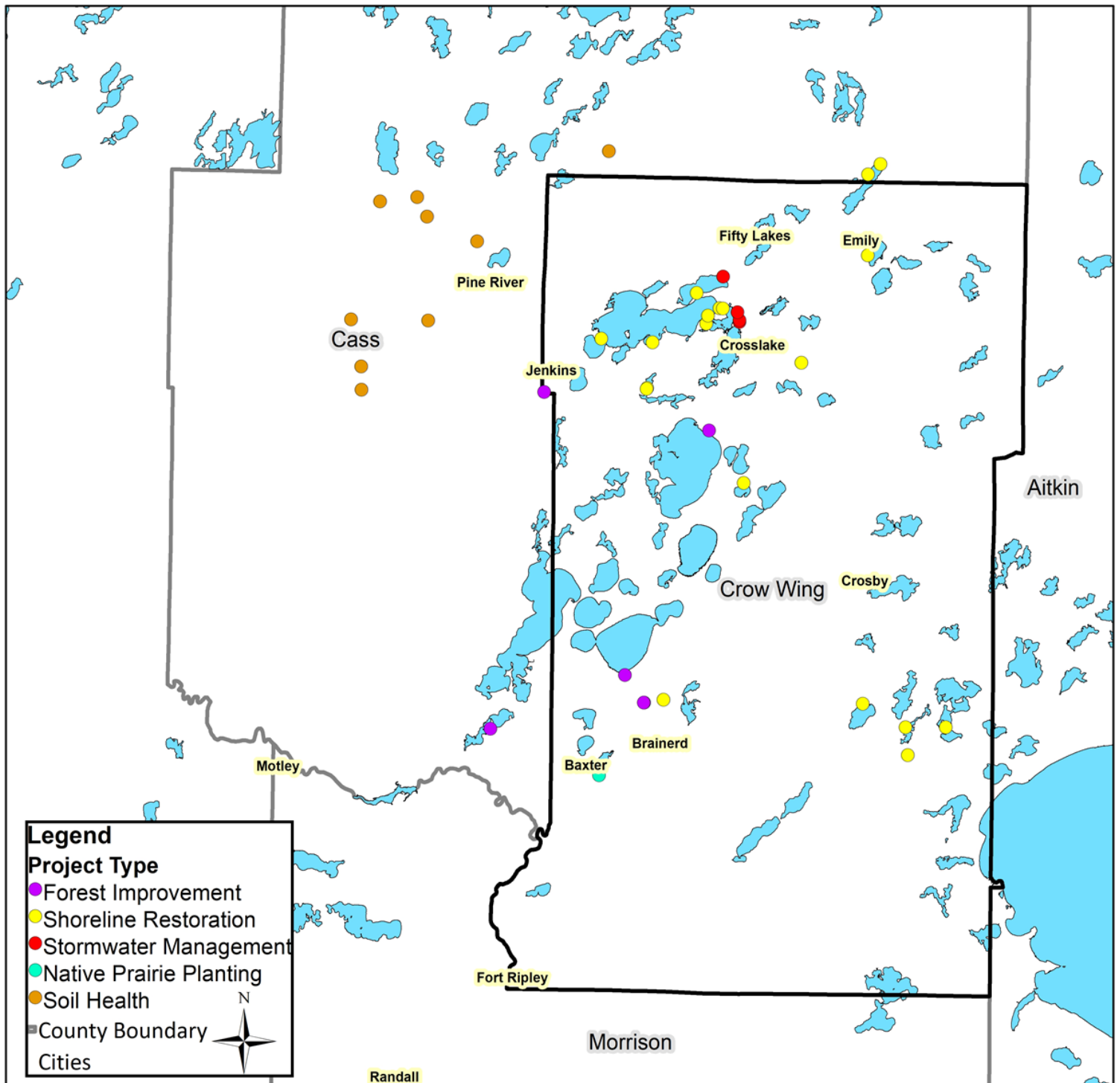
■ SWCD Operational Fundings ■ Conservation Funds



SWCD Government Aid will help provide the needed SWCD operational funds.

- Formula driven (similar to County, Cities, and Township, LG Aid).
- More efficient and effective way to provide funds to the SWCDs.
- State is less involved and provides more flexibility to SWCDs.

Completed Projects

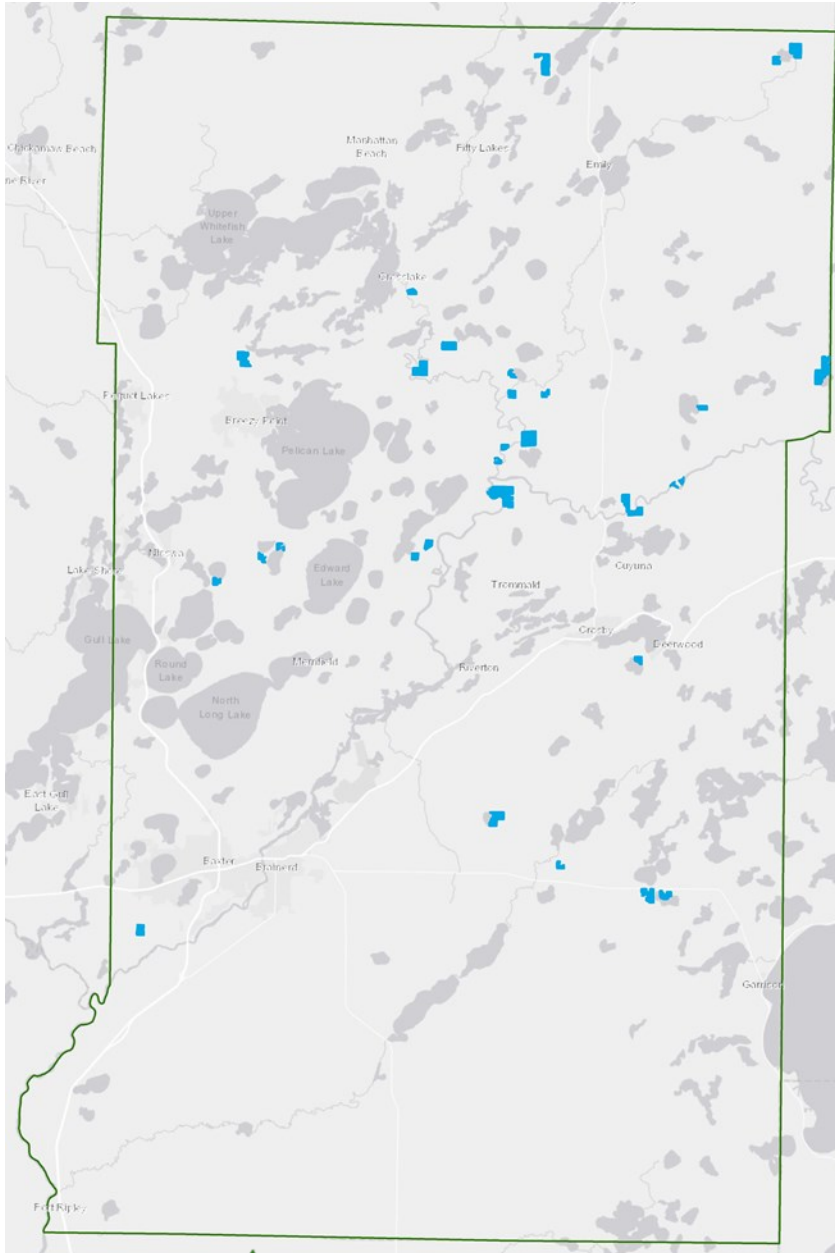


- 72 Site Visits
- 22 Shoreline
- 1 Pollinator
- 10 Soil Health
- 7 Forest Projects



Protecting Habitat

Completed	Number of Easements	Number of Acres	Shoreline Miles	Payment to Landowner
Total	55	2,750	23.8	\$3.8 Million

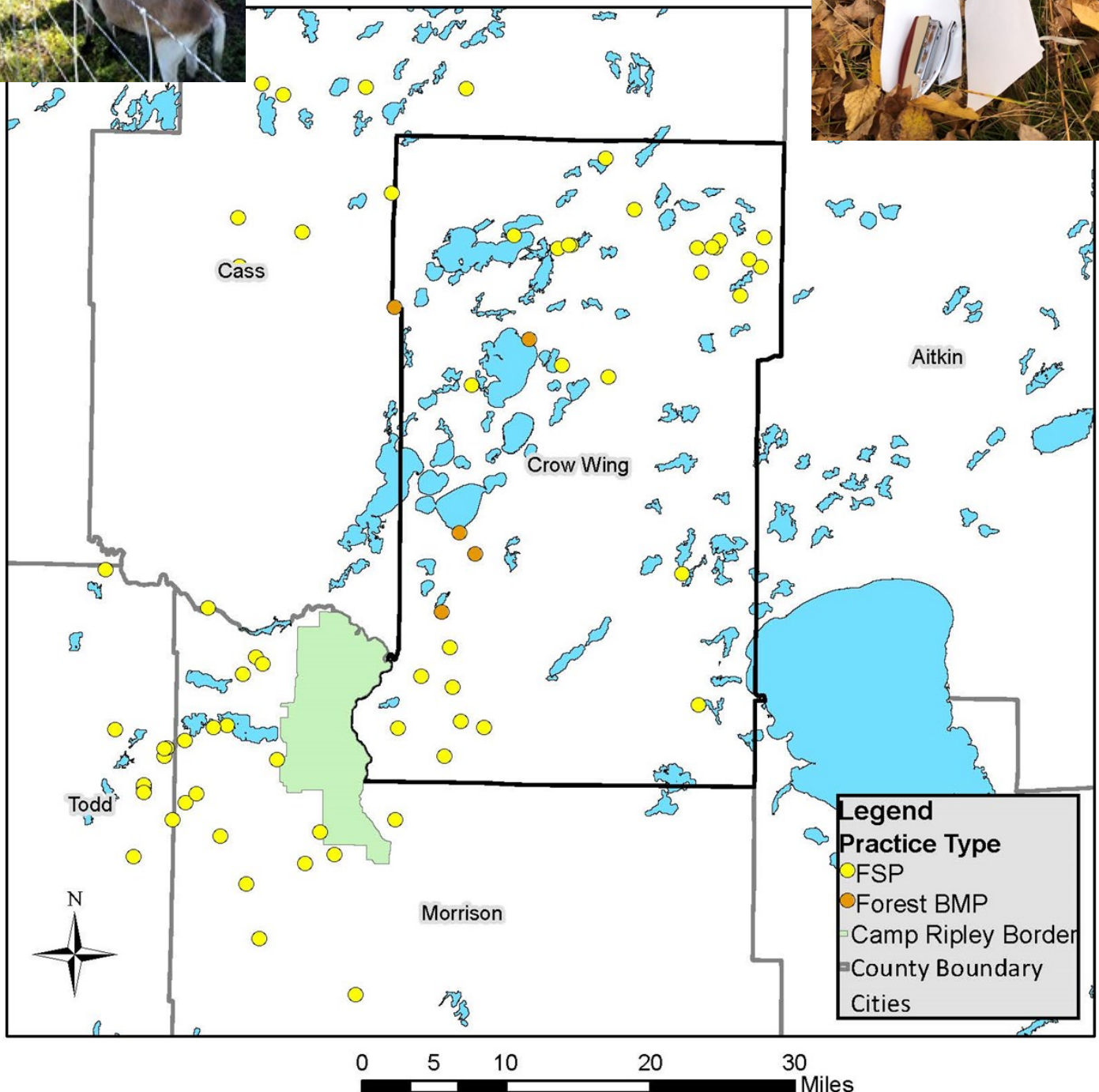


Pending	Number of Easements	Number of Acres	Shoreline Miles	Payment to Landowner
Total	13	1,150	3	\$2.5 Million

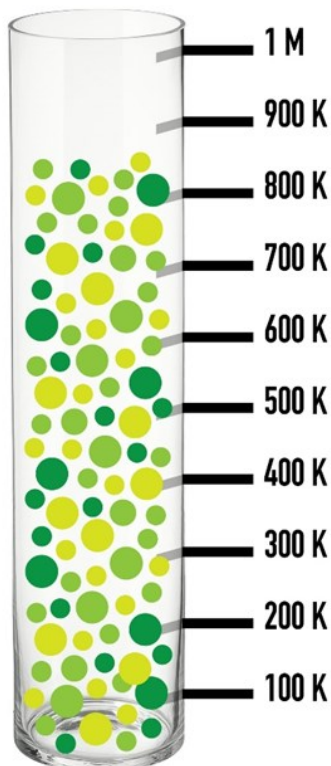
Woodland Management



Forest Stewardship Plans
– 65 completed
Best Management Practices
– 6 projects



Landowners Planted 27,000 Trees



Since 1999, the SWCD has helped landowners' plant 869,727 trees.

Thank you to our tree sale customers !

Crosslake Stormwater Fixes

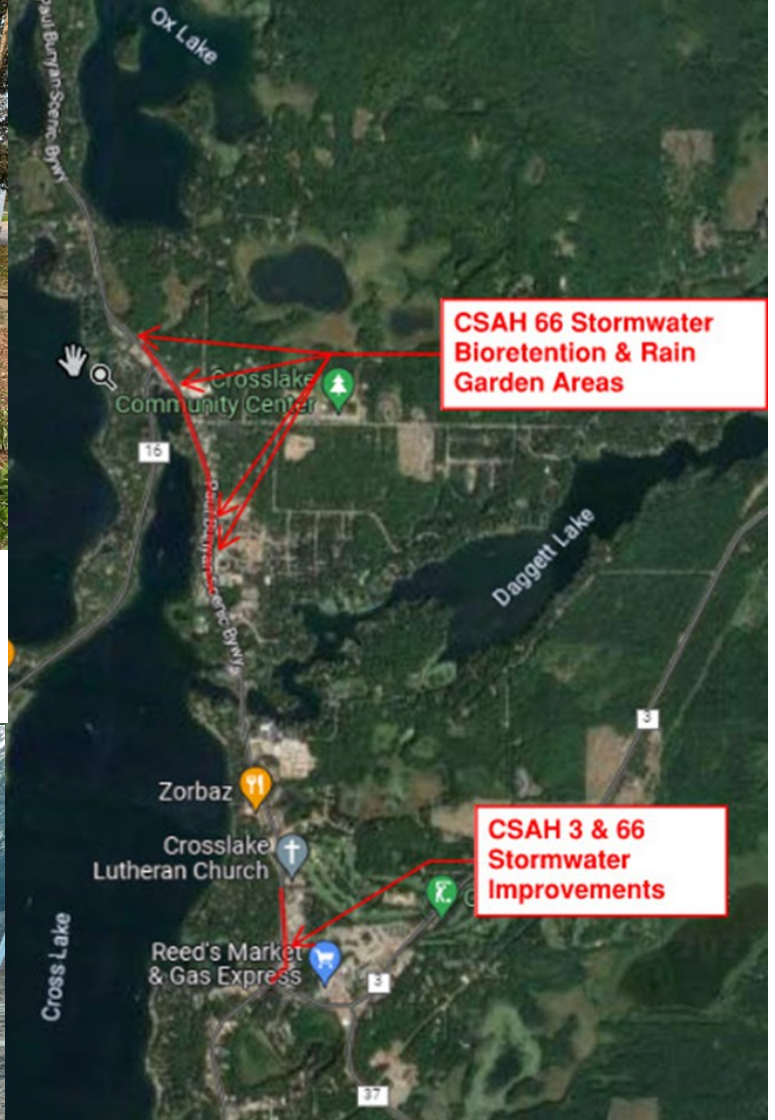


Four private and public partnerships redirected polluted runoff to the east side of CSAH 66.

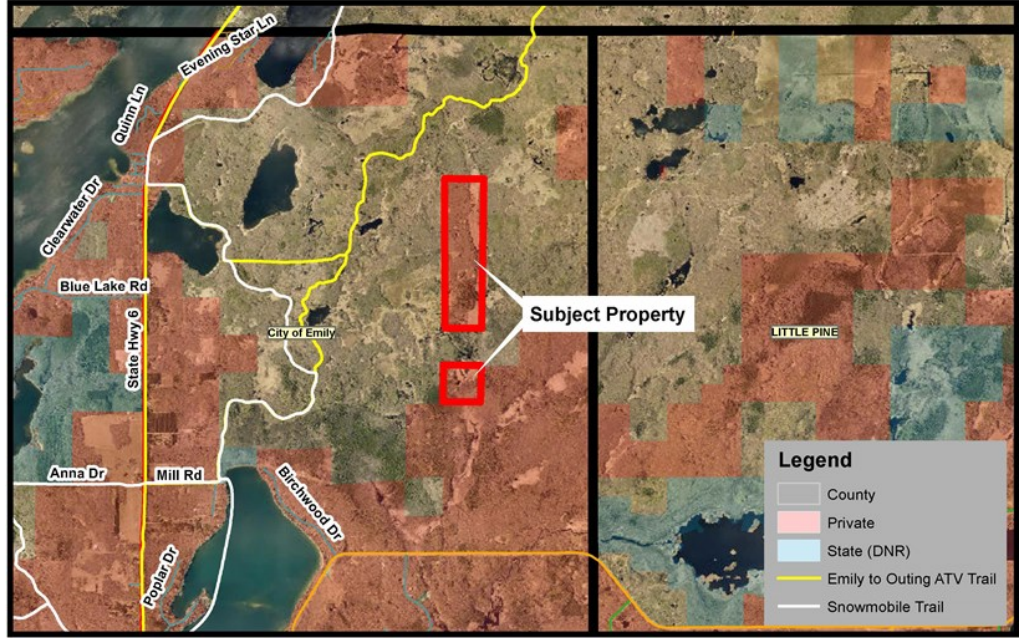


Costs: \$83,000 CWC Highway, \$166,000 City of Crosslake, and \$400,000 State and Federal Grants.

Reduced 1.2 tons of potential algae growth to Crosslake per year (4.7 pounds of phosphorus, 1lb=500 pounds of algae).



200 Acres of Forest Land Donated to CW County

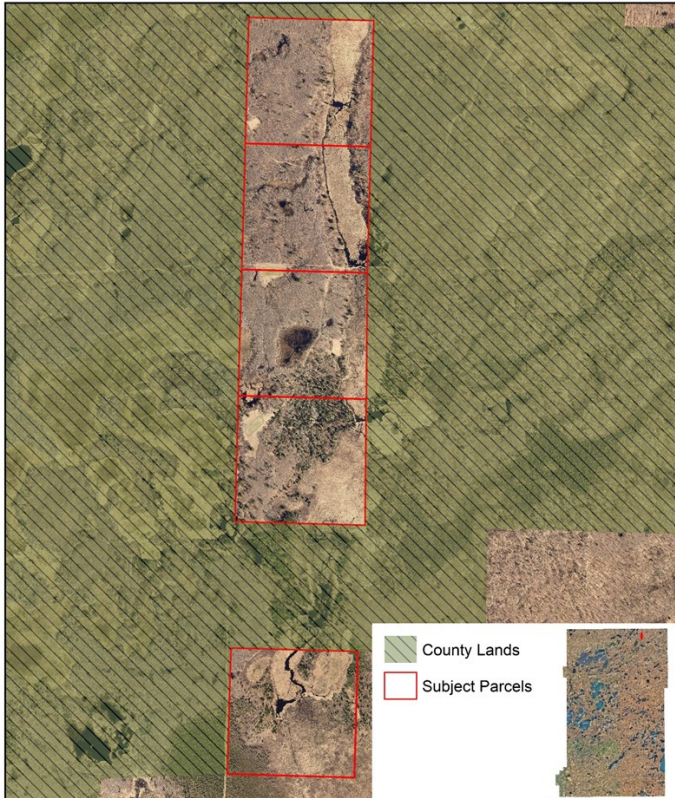


1 inch = 3,540 feet

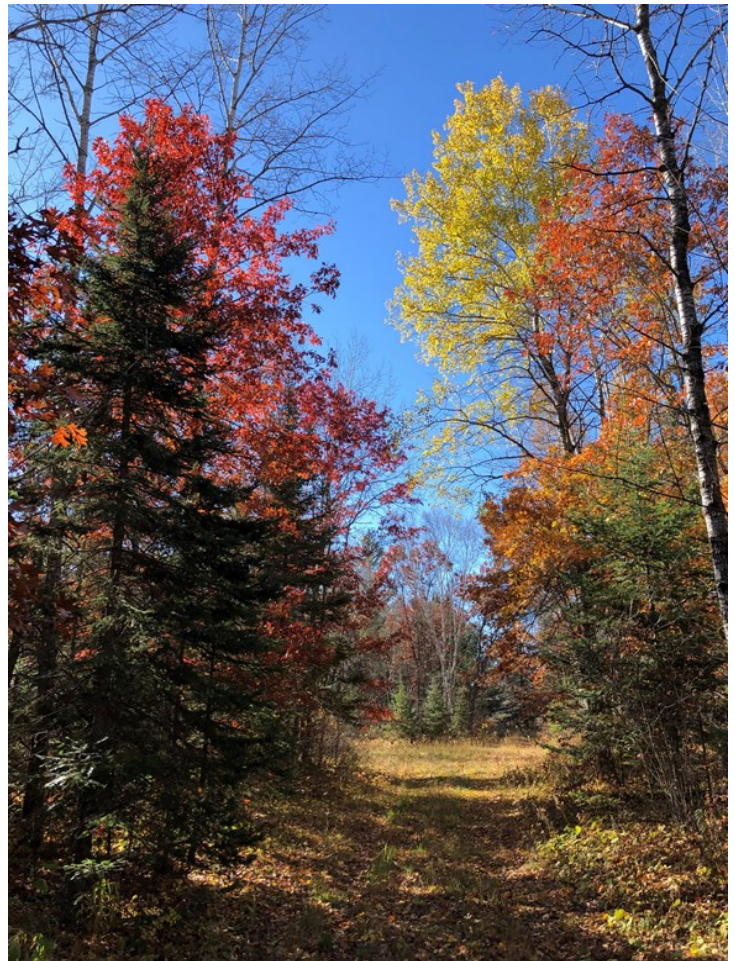
0 0.35 0.7 1.4 2.1 2.8 Miles

Date: 12/13/2021

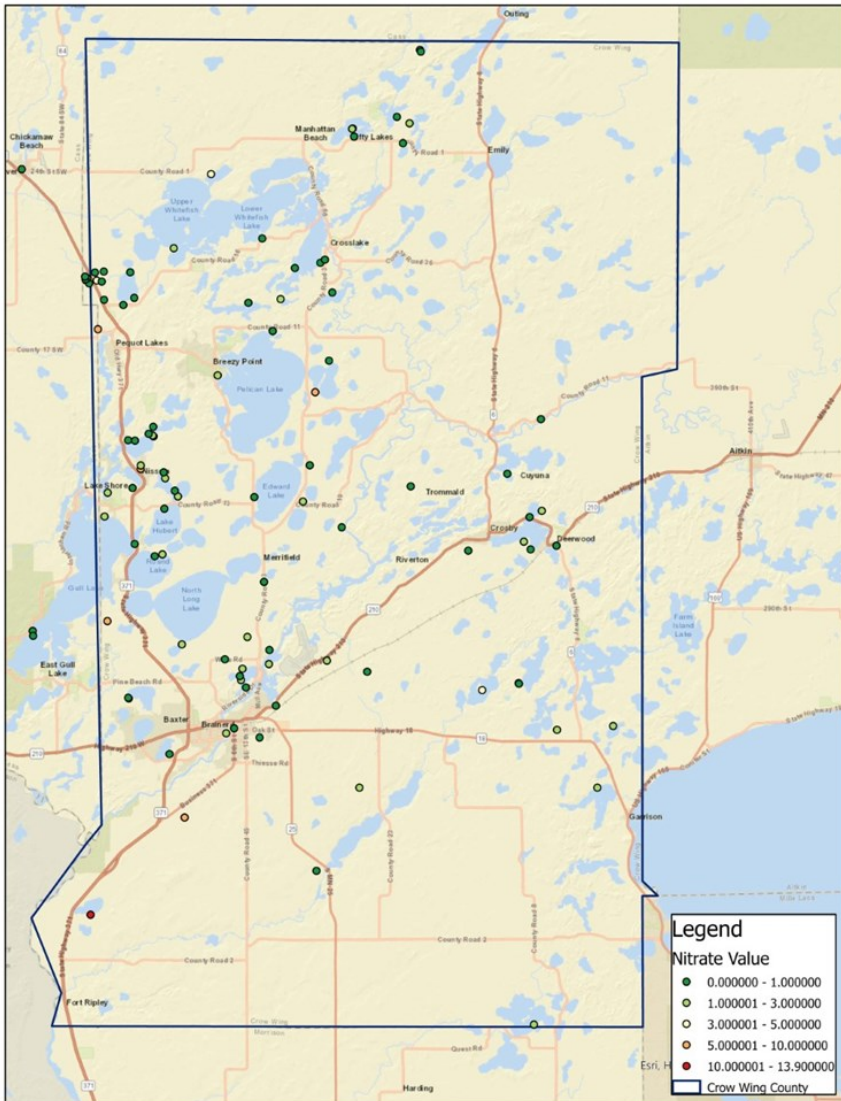
City of Emily - Crow Wing County
T 138 R 26 S 12
T 138 R 26 S 13



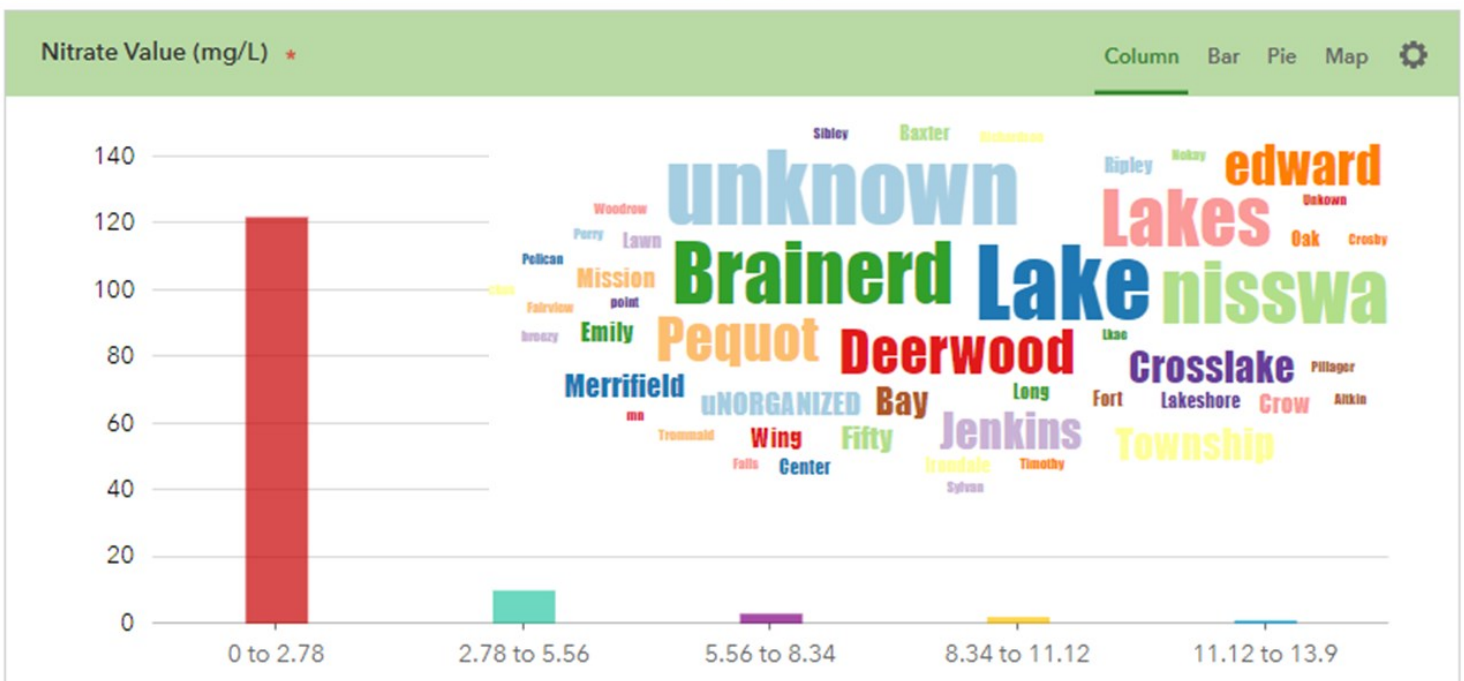
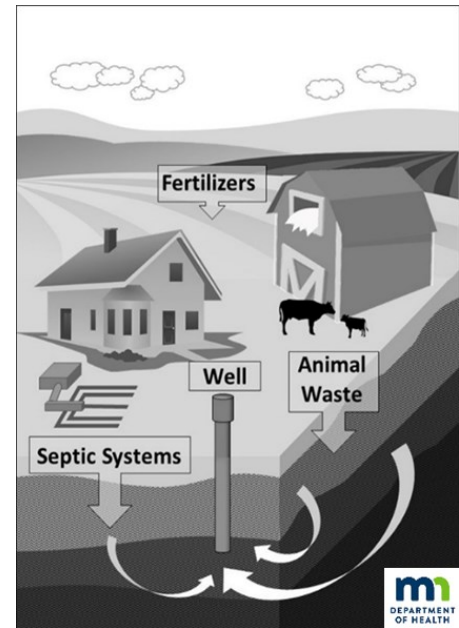
0 0.175 0.35 0.7 Miles



Well Water Nitrate Testing



- Hosted 4 free nitrate clinics
- 138 homeowners tested their wells.



Kristie Roedl

CWC Conservationist of the Year



Kristie has partnered with the SWCD to complete:

- 28 landowner site visits and 17 shoreline projects for a total of 74,000 square feet.
- Coordinate five community project builds and trained over 120 people through WAPOA Shoreline Open House.
- Leveraged over \$120,000 in project funding.



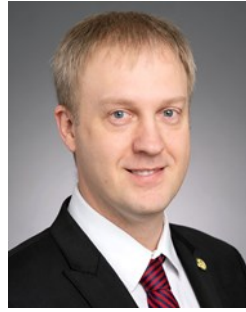
Senator Ruud

MASWCD Legislator of the Year Award



Thank you for
your service!

Conservation Partners



Senator Eichorn



Rep. Heintzeman



Rep. Davis

