

Crow Wing SWCD 2023 Annual Report



Crow Wing
SOIL & WATER
CONSERVATION DISTRICT

2023 Conservation Report



Table of Contents

Elected Citizen-Led Board.....	2
Conservation Funding.....	3
Site Visits.....	4
Completed Projects.....	5
Completed Easements.....	6
Forestry Plans & BMPs.....	7
Pollution Reduction Numbers.....	8
Tree Sale.....	9
Water Quality Monitoring.....	10
Nitrate Testing.....	11
Project Highlight.....	12
Community Conservationist of the Year.....	13
Outstanding Forest Steward.....	14
County Conservationist of the Year.....	15
County Partnership.....	16
Office Snapshots.....	17
Conservation Partners.....	18






Vision: Clean water, productive lands, and vibrant communities.

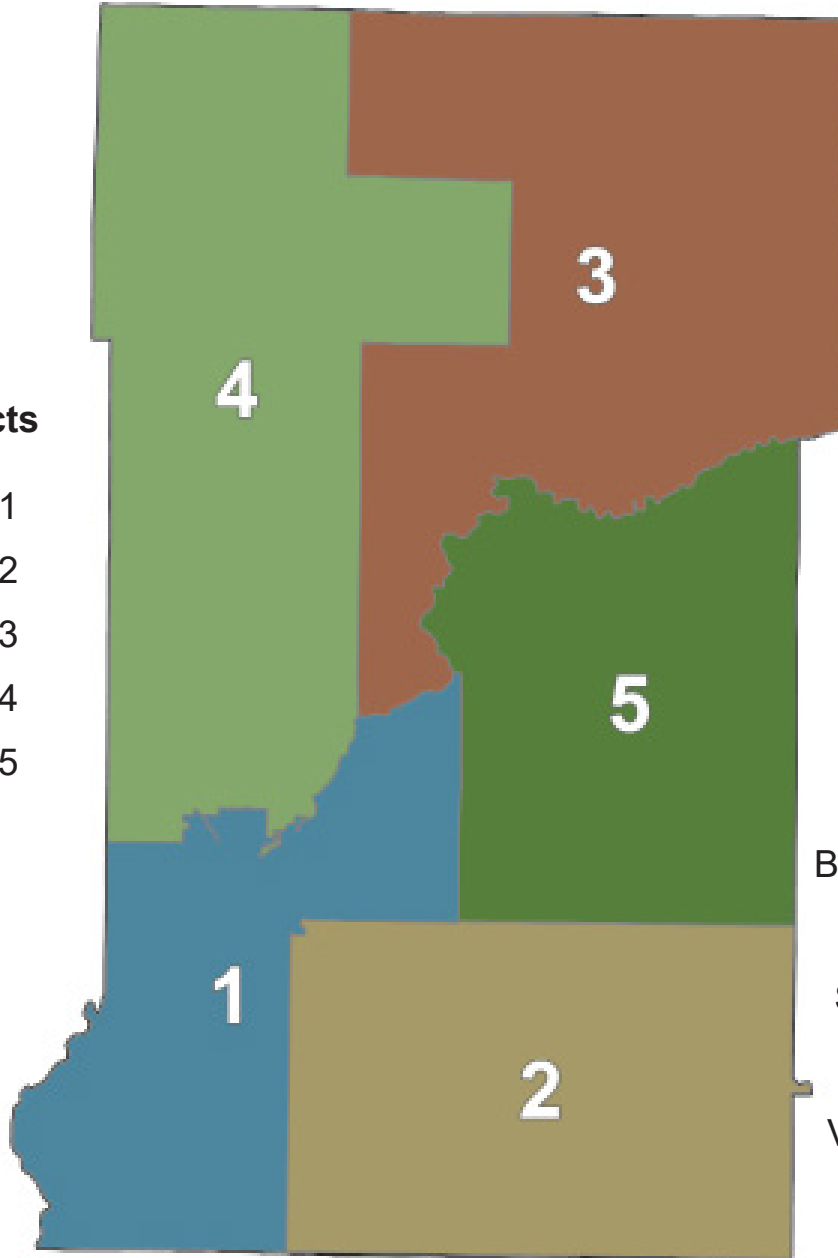
Mission: Fostering healthy lands and clean water through voluntary conservation.

Values: Stewardship, Support, Integrity, Leadership, and Partnerships.

Supervisor District Map

SWCD Districts

-  District 1
-  District 2
-  District 3
-  District 4
-  District 5



Crow Wing SWCD Board of Supervisors

Jim Chamberlin
Board Chair, District 5

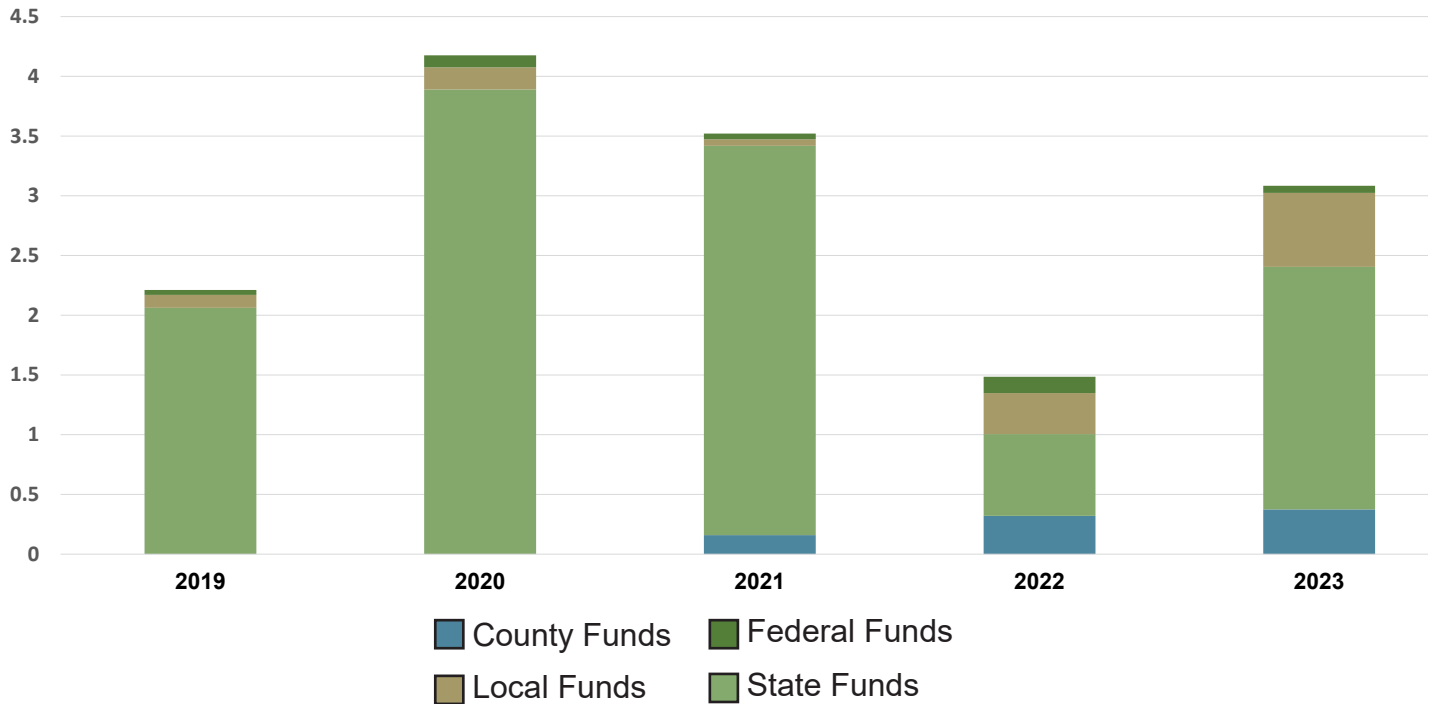
JoAnn Weaver
Secretary, District 4

Roger Wayatashek
Vice-Chair, District 3

Diane Jacobsen
Reporter, District 2

Leonard Koering
Treasurer, District 1

Conservation Funding



2023 = \$3.08 Million for Conservation!

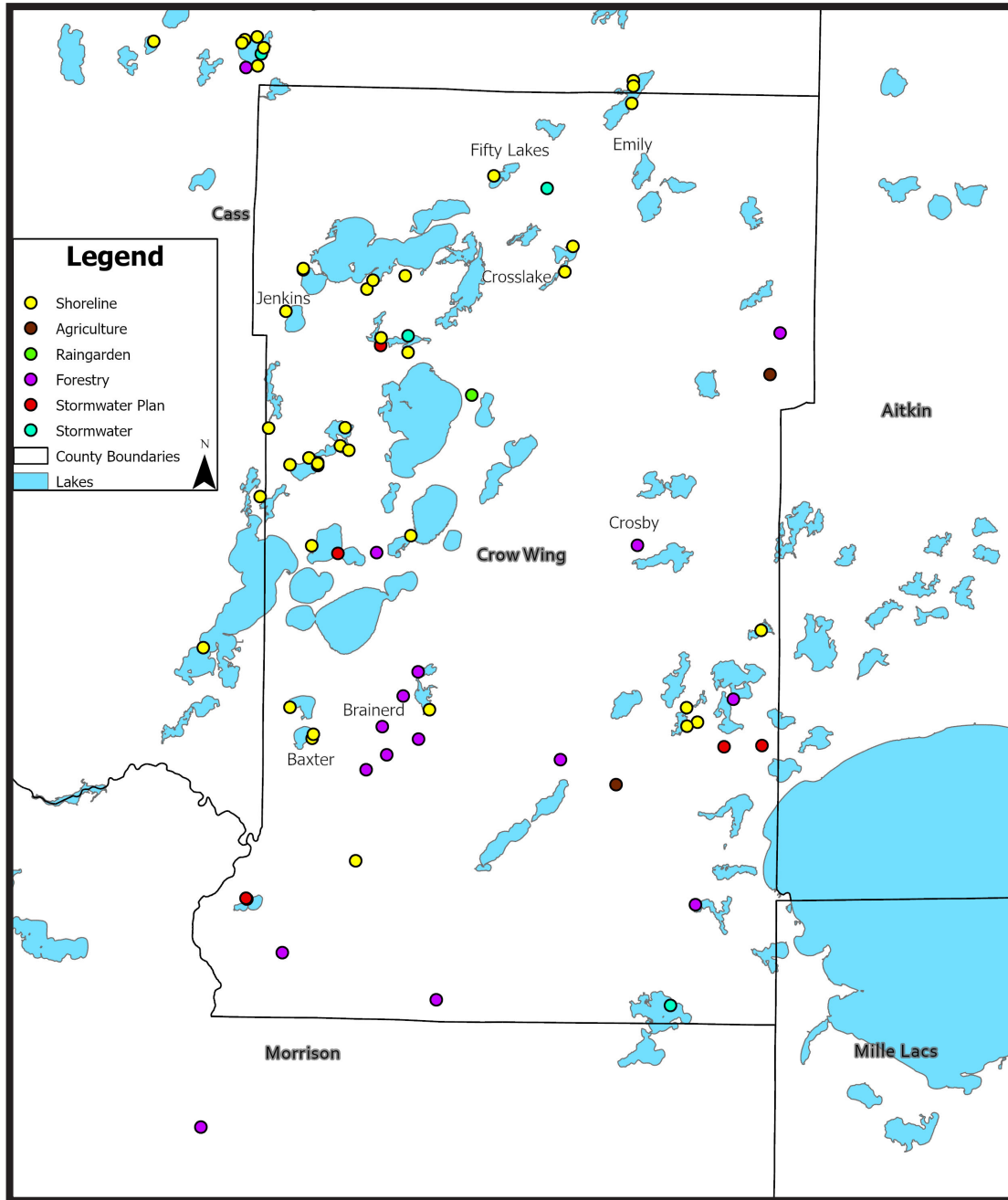
County Funds	
Fee For Service	\$7,500
County Highway Department	\$4,000
In-Kind Contribution	\$47,989
Total	\$59,489

Local Funds	
Landowner Contributions	\$102,154
City of Baxter	\$222,500
Good Samaritan Society	\$294,271
Total	\$618,925

State Funds	
Pine River WBIF Phase III	\$634,381
BWSR Clean Water Funds	\$975,000
BWSR Soil Health, Cost Share, Conservation Delivery and Local Capacity	\$200,242
SWCD Government Aid	\$173,819
SWAG	\$46,522
Total	\$2,029,964



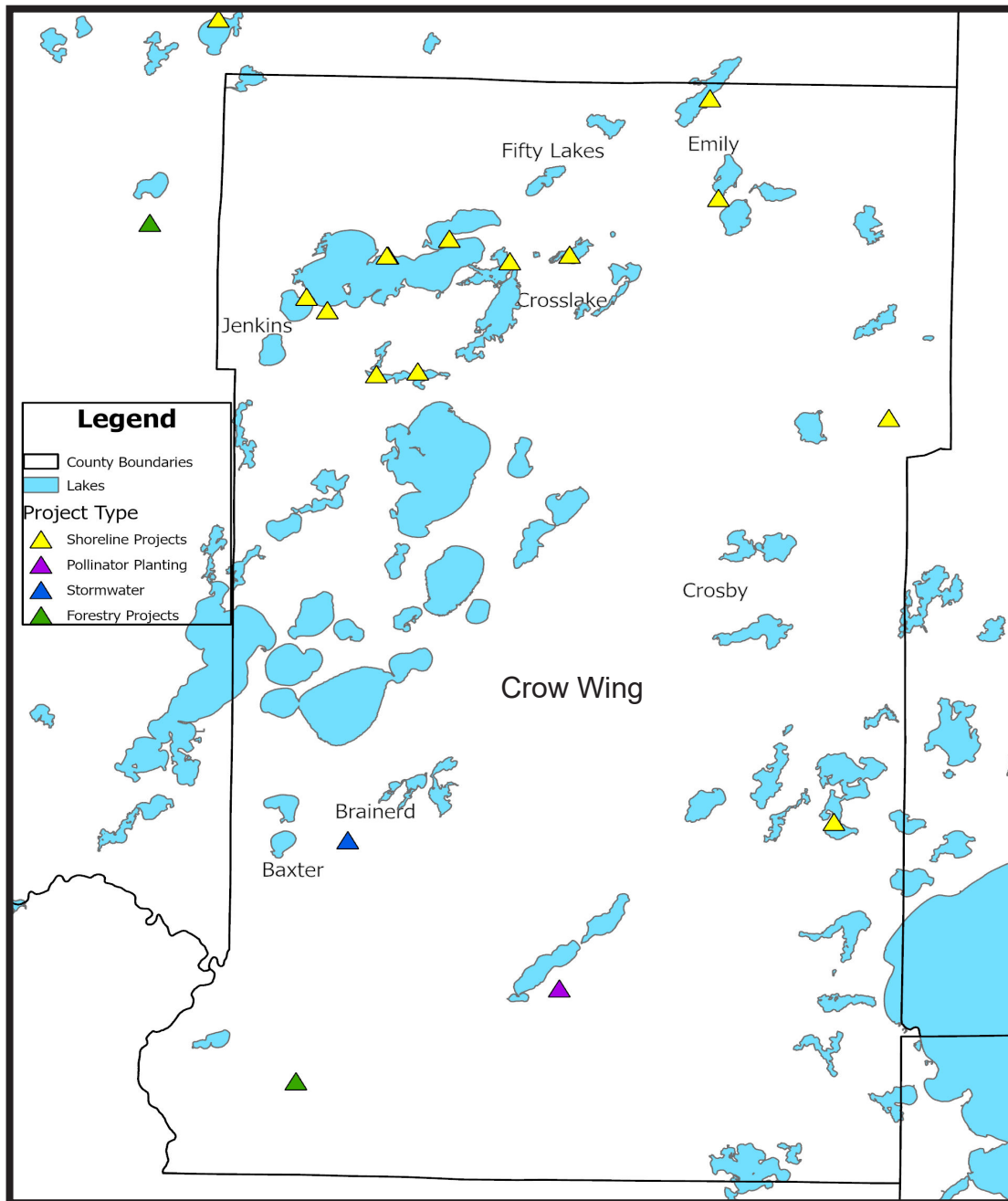
Site Visits



- 44 Shoreline Visits
- 5 Stormwater Visits
- 7 County Stormwater Plans
- 2 Agricultural Visits
- 16 Forestry Visits
- 1 Raingarden Visit
- **75 Total Site Visits**



Completed Projects



- 3 Forestry Projects
- 1 Pollinator Habitat Projects
- 14 Shoreline Projects
- 1 Stormwater Project
- **19 Total Projects**

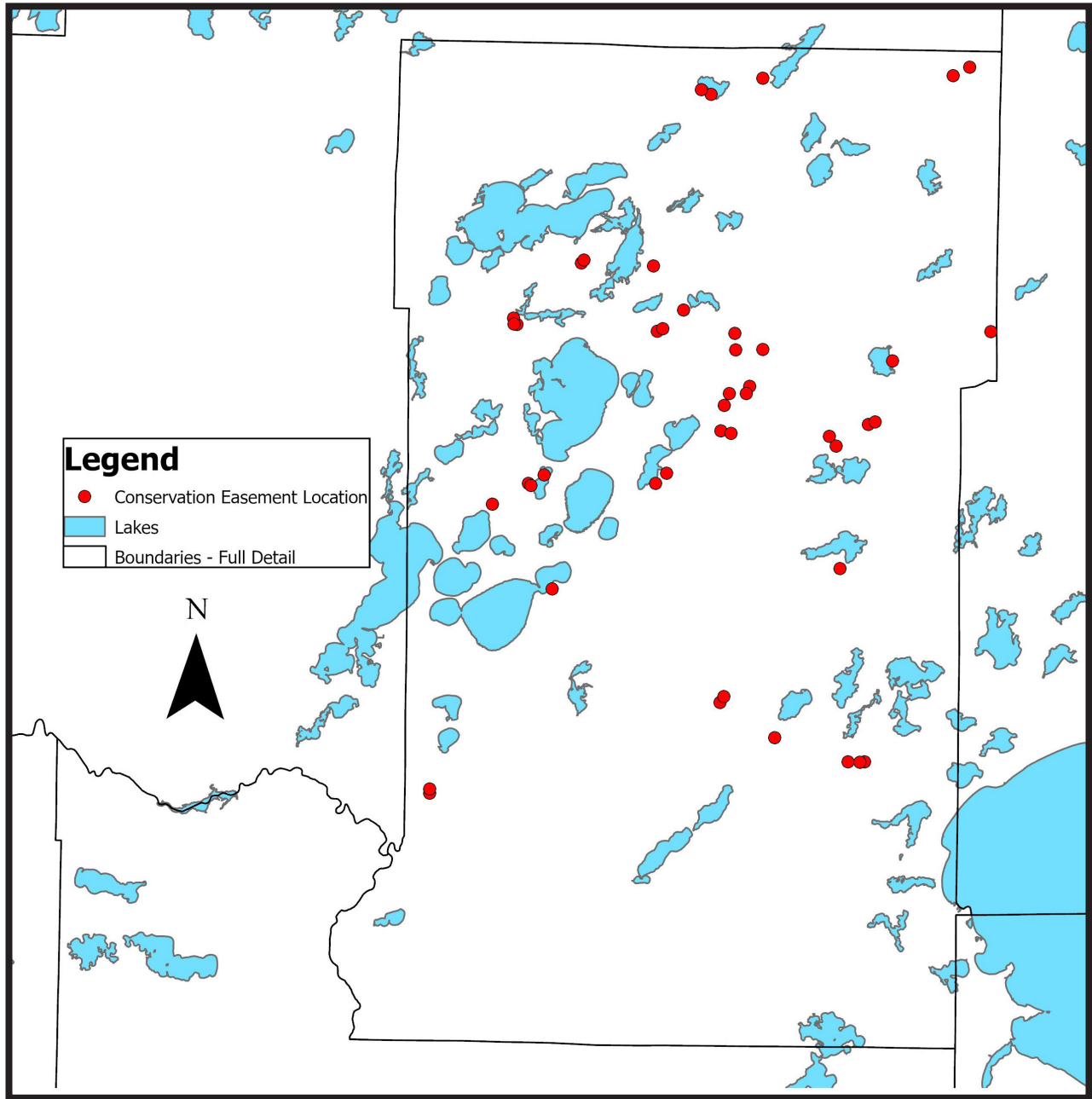
Before



After



Completed Easements

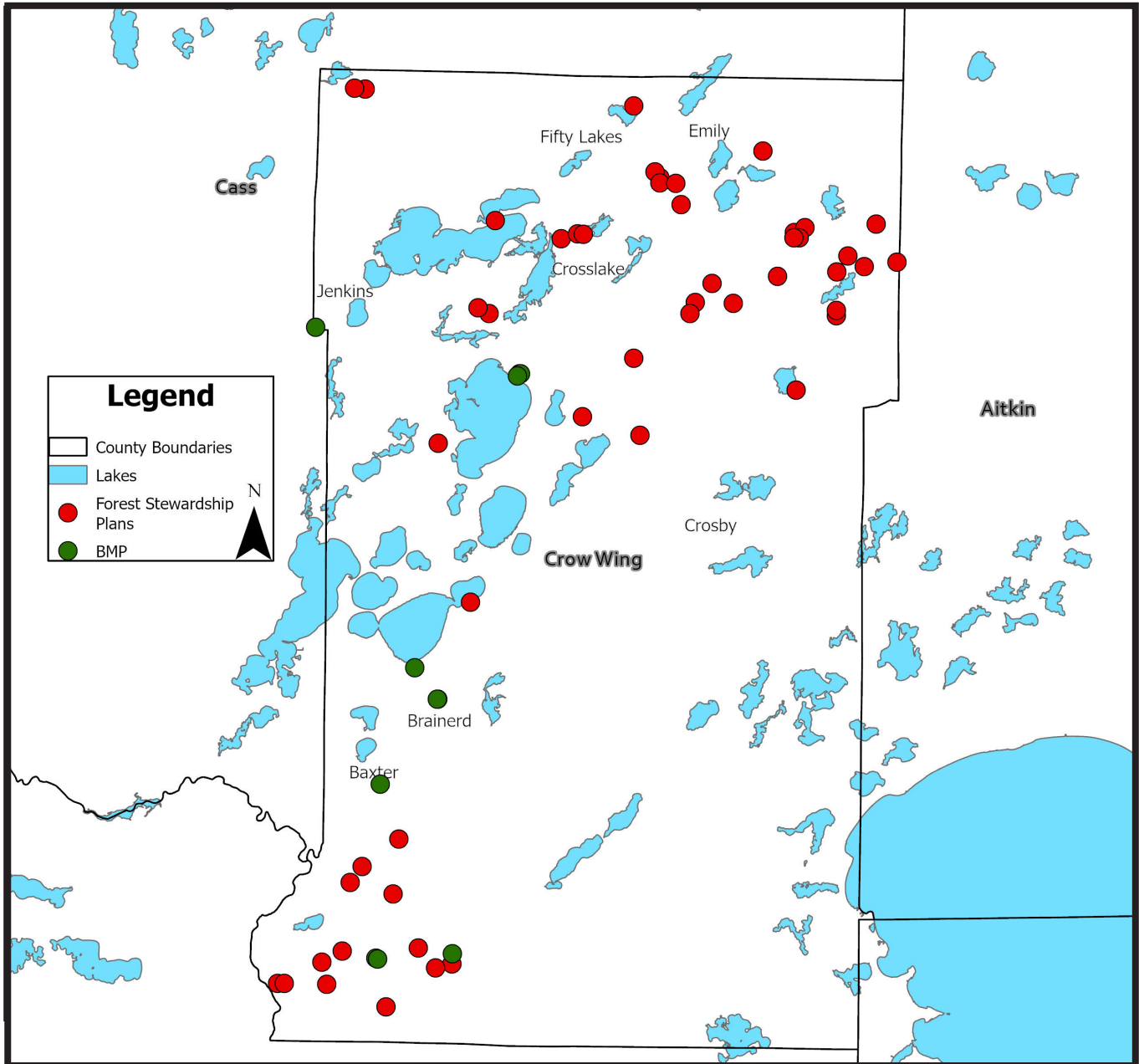


	Number	Acres	Shoreline Miles	Payment to Landowners
2023 Easements	5	201.5	1.366	\$487,675
Total Easements since 2010	60	2965.45	25.52	\$4,416,159

Forestry Plans & BMPs



All Forest Stewardship Plans and BMPs



	Forest Stewardship Plans	Best Management Practices (BMPs)
2023	20	4
Total since 2010	50	13

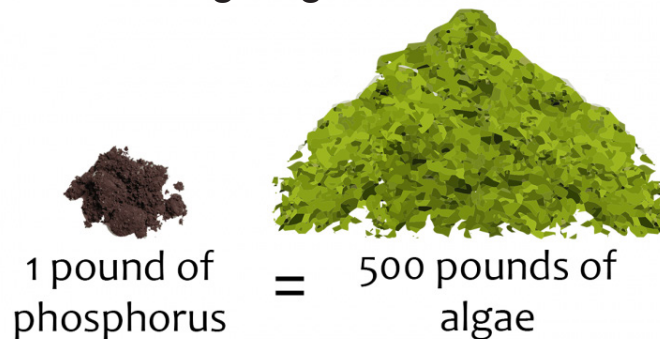
Pollution Reduction Numbers



Our projects installed in 2023 will:

- Prevent 162.35 lbs of phosphorus from reaching lakes or streams every year
- Prevent 31.3 tons of total suspended solids from entering waterways every year
- Produce 4.89 tons of soil savings every year

Phosphorus is the nutrient found in manure, leaves, soil and lake sediments that fertilizes plant and algae growth in the lakes



81,175 lbs of algae will be prevented from forming in our lakes every year.

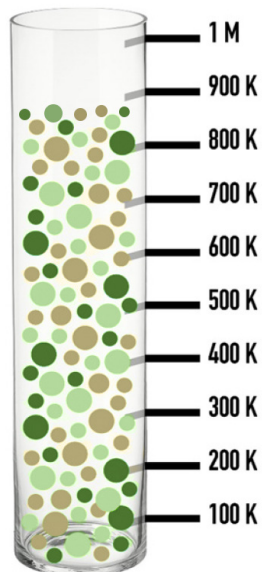
That weighs the same as 811 Adult Moose!
That much algae would fill 4 dumptrucks!



Tree Sale & Photo Contest



28,400 trees planted this year!



Since 1999, the SWCD has helped landowners plant 898,127 trees



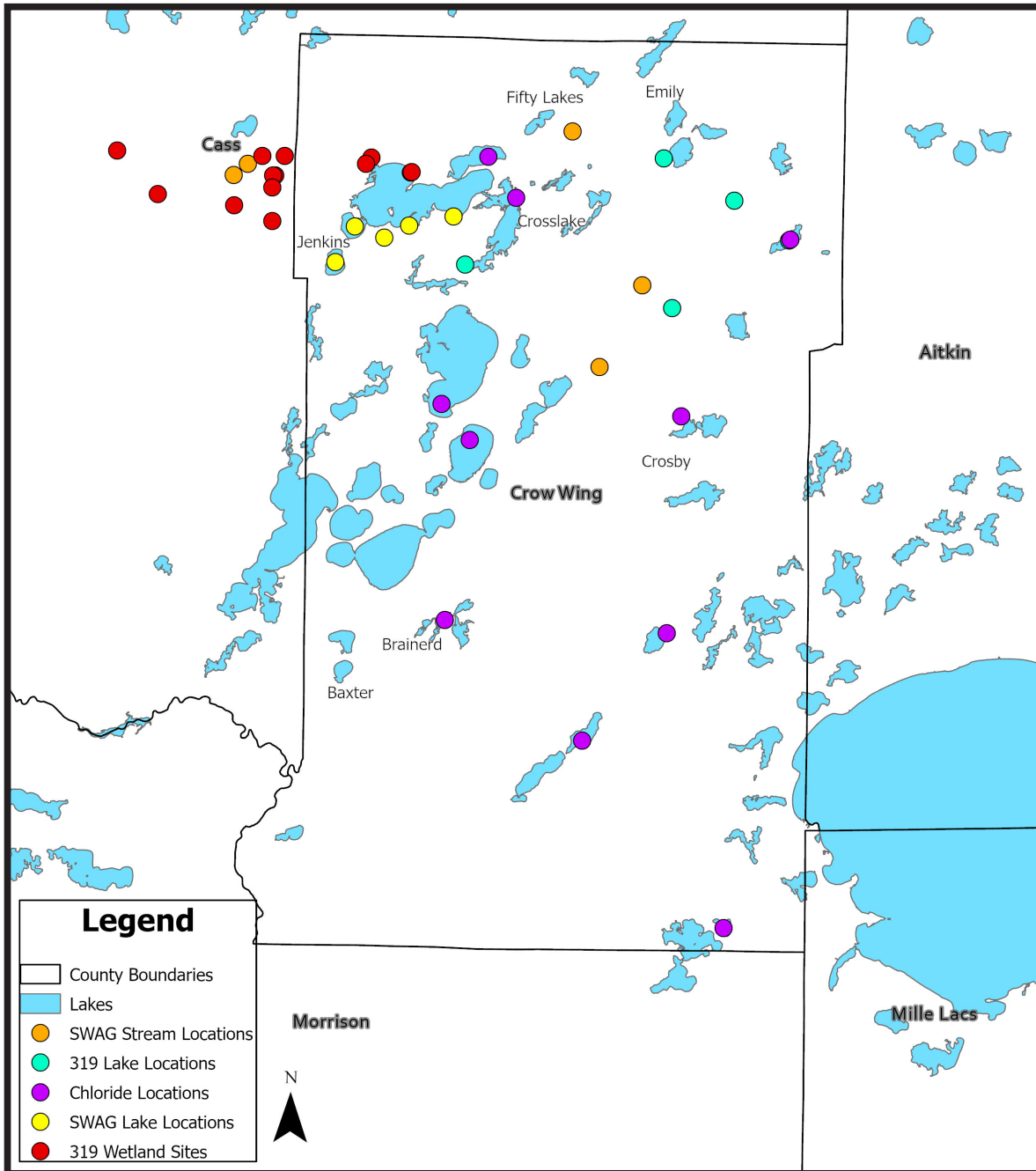
Congratulations to our Photo Contest winner Jennifer Quam for her photo of "Staghorn Sumac with Robin!"



Water Quality Monitoring



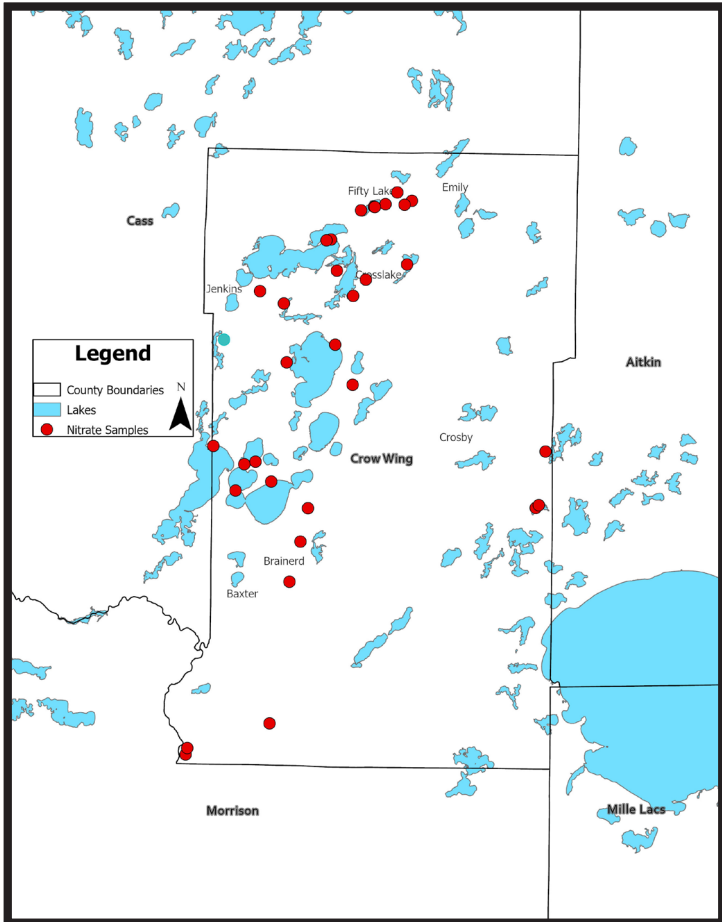
Made possible by our wonderful partners and volunteers!



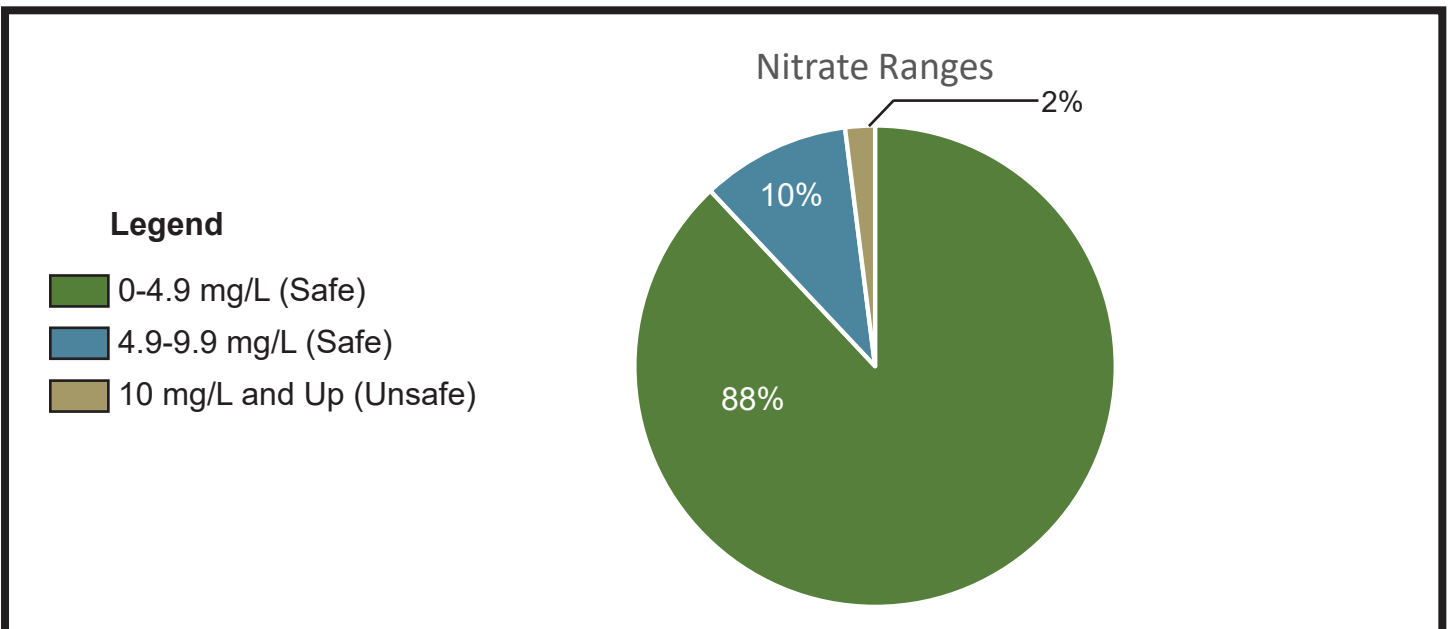
- 1,495 Samples Taken
- 5 Total Volunteers
- 47 Volunteer Hours



Well Water Nitrate Testing



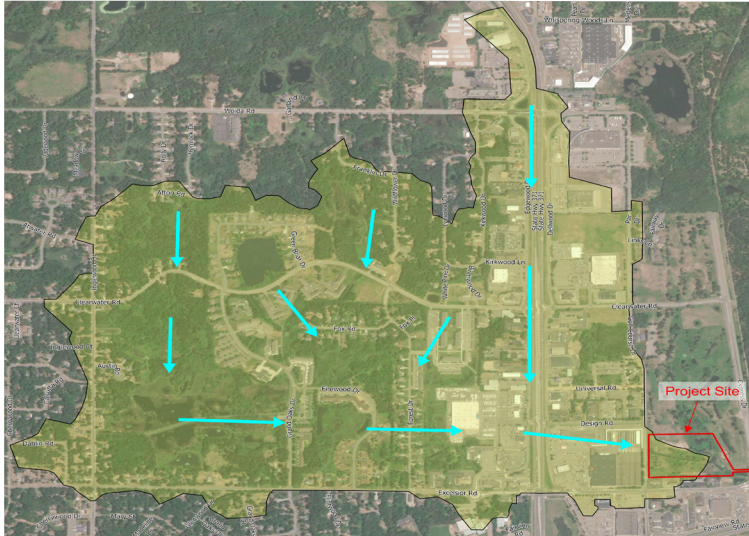
- 1 Nitrate Clinic hosted in Crosslake
- 1 Nitrate Clinic hosted in Fort Ripley
- 1 Nitrate Clinic hosted in Brainerd
- 50 total samples taken



Whiskey Creek Project



Whiskey Creek Storm Water Wetland



- Prevents 62,540 pounds of total suspended solids and 142 pounds of phosphorus from flowing into the Mississippi River per year
- ~\$890,000 from Clean Water Fund Grant (with matching dollars by the city)
- 400 acres drain to this area
- 13.79 acres of vegetated wetland

Project Schedule

2013: Project property purchased by Evangelical Lutheran Good Samaritan Society.

2013: CWSWCD study by HDR identified site location and type of best management practice.

2014: HDR feasibility study recommended basin size and provided a pollutant treatment estimate.

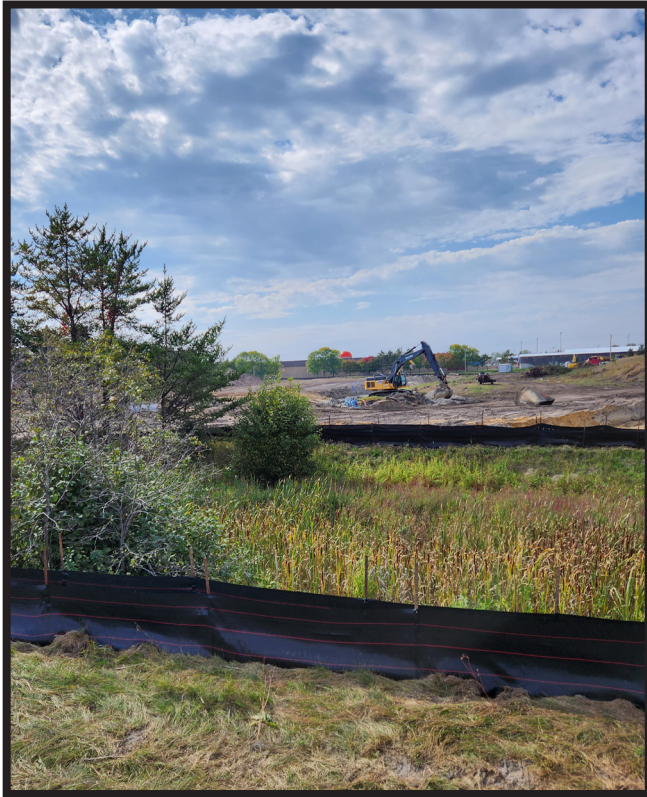
2022: HR Green completed phase 1 environmental site assessment and gave a technical recommendation for site cleanup.

2023: Wetland permitting approved. Final design approved. Site cleanup completed. Land sale completed. Construction of basin completed.

Spring 2024: Planting expected to be completed.



Community Conservationist of the Year



Thank you Evangelical Lutheran Good Samaritan Society!

Good Samaritan Society has:

- Willingly sold the city 13.79 acres of land for stormwater treatment project.
- Continued with the purchase agreement and assisted with contaminant cleanup after mercury was found on site.
- Made the Whiskey Creek project possible with their assistance.

Outstanding Forest Steward



Thank you Dean Makey!

Dean has:

- Hosted Forestry Days at Forestview Middle School to educate middle school students about forestry and the importance of being a good forest steward.
- For 13 years, he has helped kindergarten classes plant trees and revisit them once they are in 5th.
- Managed and maintained the health of the school forest.

County Conservationist of the Year



Thank you Tony Coffey!

Tony has:

- Taken technicians out onto the Whitefish Chain of Lakes for phosphorus, total phosphorus, chloride and 319 grant water monitoring.
- Been the President of the Whitefish Area Property Owners Association (WAPOA) since 2018.
- Been an outstanding advocate for shoreline buffers, native plantings and lake health to the members of WAPOA.

County Partnership



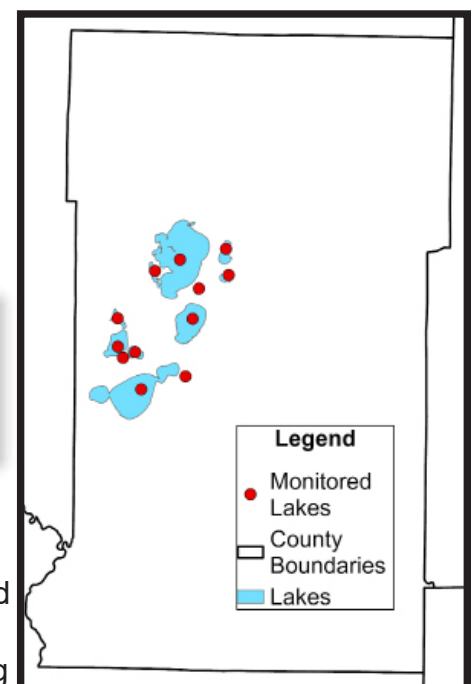
- Performed water monitoring and measurement of water quality data/trend assessment via administration of the 30 Lakes Watershed District Monitoring Program and the monitoring of three additional lakes for chloride (Actions 1-3).
- Assisted with implementation of Crow Wing County Water Plan priority “groundwater” by hosting nitrate clinics and a septic care/maintenance training (Objectives 1 & 2).
- Assisted with implementation of Crow Wing Water Plan priority “surface water” via the implementation and design of storm-water, sediment and erosion control measures via shoreline buffers. Land use was also managed via promotion of private forest management, conservation easements and additional measures (Objectives 1-5, Actions 1-8).
- Implementation and design of agricultural best management practices (Actions 1-5).
- Partnered with the county to develop and produce three videos about storm-water management and the county requirements regarding them.
- Worked with the highway department and the city of Crosslake to develop improvements to storm-water management along highway 66. Over \$1.2 million leveraged to support these efforts and an additional \$300,000 earmarked for completion of the projects in 2024 and 2025.
- Support in creation and implementation of the comprehensive watershed plans for Pine River, Rum River and Mississippi-Brainerd.
- Objectives and action relate to the Crow Wing County Water Plan which can be found at crowwing.gov



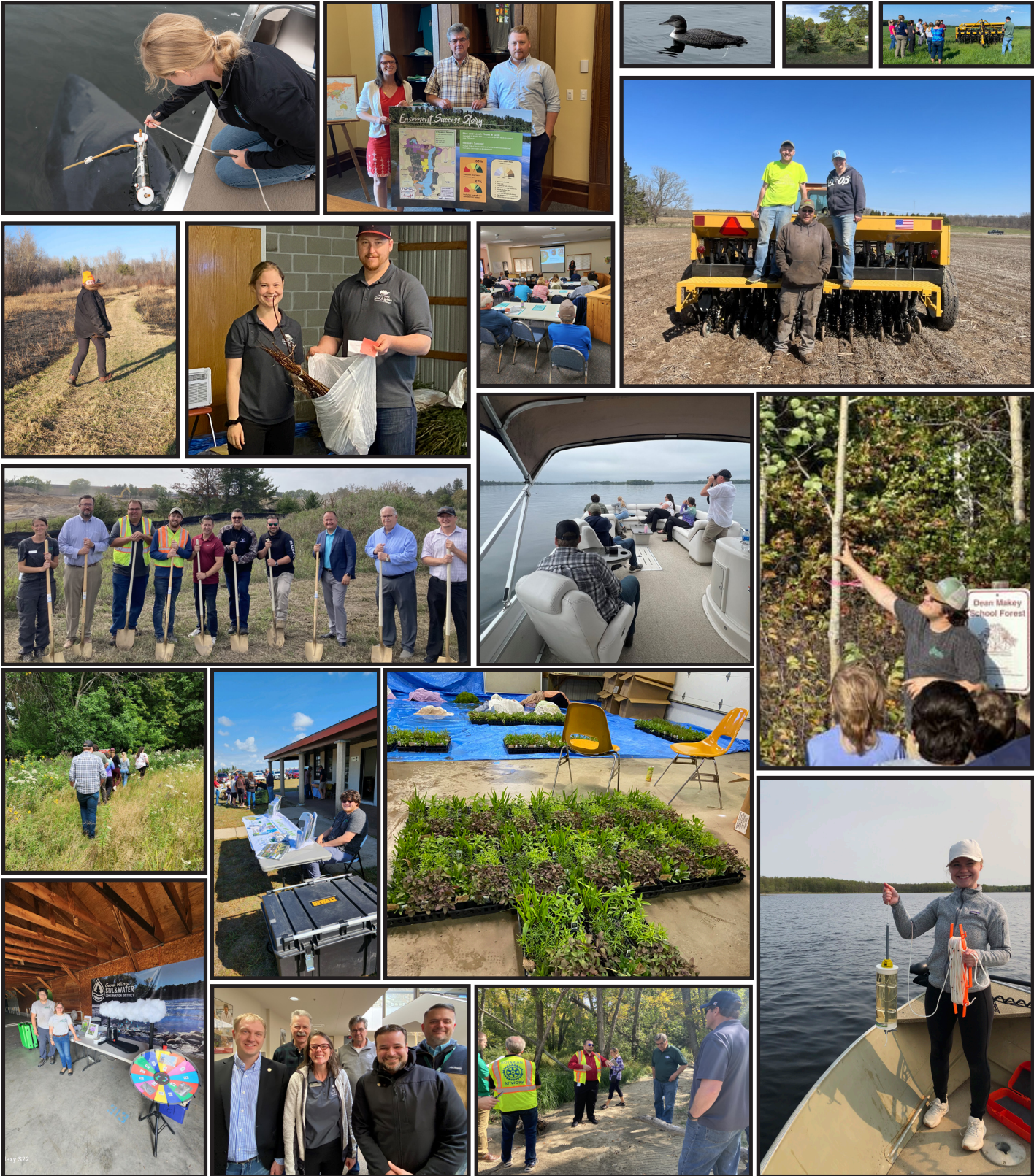
Highway 66 Projects



30 Lakes Watershed District Monitoring



Office Snapshots



817-572

Conservation Partners



AECOM



PINE RIVER Watershed Alliance



Sen. Eichorn



Rep. Heintzeman



Rep. Davis



UNIVERSITY OF MINNESOTA
EXTENSION

Driven to Discover™



ENVIRONMENT AND NATURAL RESOURCES TRUST FUND



Protecting nature. Preserving life.™



CAMP RIPLEY SENTINEL LANDSCAPE



CLC CENTRAL LAKES COLLEGE



BOLTON & MENK
Real People. Real Solutions.



NATIONAL LOON CENTER



8740 77th Street NE, Otsego, MN 55362



US Army Corps of Engineers®
St. Paul District

